

**STEIGER®**  
**TBR 260**



# STEIGER® TBR 260



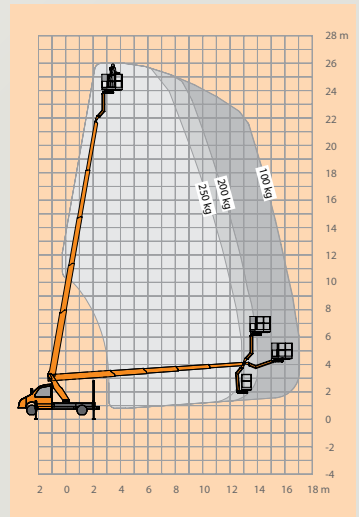
## FEATURES










- 26m max. working height
- 17m max. outreach
- 14.2m max. lateral outreach
- 250kg basket-load
- 4 movements simultaneously possible (lift, rotate, telescope, Rüssel up/down) + basket rotation
- Mobile jib boom (RÜSSEL®), rotation 185°
- Improved work speed
- Premium technology in highest stability with easy handling
- High-strength, fine-grained steel for maximum stability
- Improved basket unit with new design
- Common parts to other STEIGER® models for even more operating and maintenance efficiency
- Reduced stock of spare parts through modular design
- Improved torsion-resistant substructure construction
- Boom system with laser-welded seam (less distortion, more precise and more stable)

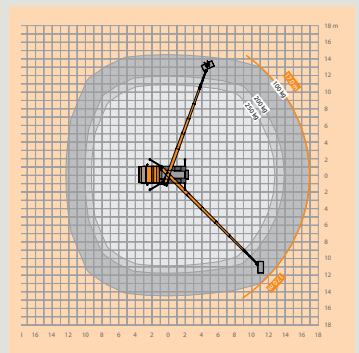
The STEIGER® TBR 260 features a whopping 26m working height and 17m outreach capacity.

The new generation of STEIGER® models in the 3.5t category feature increased operating performance and maximised stability and versatility at the job site. With these exciting new models in their fleet, equipment rental companies can look forward to a higher utilisation rate.

The 1.6m of additional working height and 0.7m of increased outreach capacity can be attributed to our brilliant design concept. The basket-load capacity has also increased by a full 20kg - from 230kg to 250kg.



 26m	 17m	 2 x 225°	 185°	 5°
 1.40m x 0.70m	 250kg	 3m	 7.9m	 3500kg



**working height** 26m  
**maximum outreach** 17m  
**platform capacity** 250kg



Worm-drive basket



Chassis outrigger controls



Display in work basket



Worm-drive turret



Perforated, non-slip floor