

**STEIGER®**  
**TB 300**



# STEIGER® TB 300

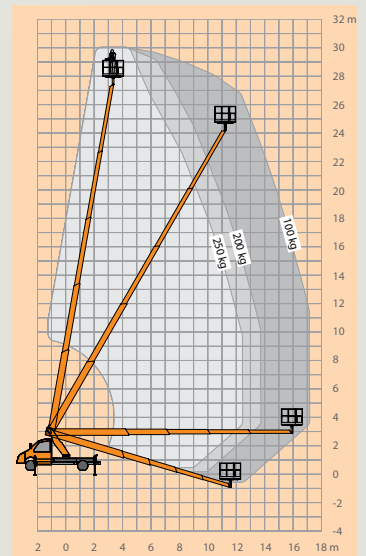
## FEATURES










- 30m max. working height
- 17.1m max. outreach
- 14.2m max. lateral outreach
- 250kg basket-load
- 3 movements simultaneously possible (lift, rotate, telescope) + basket rotation
- Improved work speeds
- High-strength fine-grained steel for maximum stability
- Newly designed basket unit
- Complements 30m class on 7.5t
- Common parts to other STEIGER® models for even more operating and maintenance efficiency
- Reduced stock of spare-parts through modular design
- Improved torsion-resistant substructure construction
- Boom system with laser-welded seam (less distortion, more precise and more stable)
- Short overall length and low construction height for high manoeuvrability
- Available on a 3.5T Mercedes Sprinter and Iveco

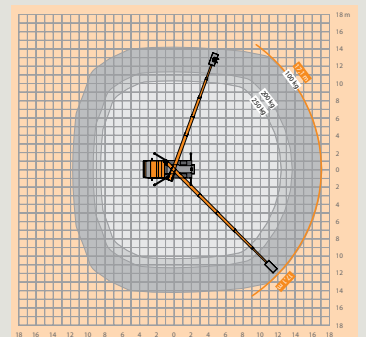
The STEIGER® TB 300 is an entirely new development. Featuring a sensational 30m working height and 17.1m reach, the TB 300 on a 3.5t chassis provides unprecedented performance capabilities. This innovation has an operating capacity that previously had only been available on 7.5t truck-mounted work platforms.

The TB 300 will not only complement the previous 30m, 7.5t category but possibly replace older, heavier truck-mounted platforms on the market today. With 1.5 meters of additional working height available on 3.5t vehicles, equipment rental companies can look forward to increased revenues, profits, and a higher ROI (return on investment). This 30m work platform also scores with its short vehicle length and low height, which greatly enhances agility.

The STEIGER® TB 300 is the undisputed flagship of the Hi-light Performance series. Hi-light stands for RUTHMANN's ingenious design and steel fabrication techniques.



 30m	 28m	 17.1m	 2 x 225°	 5°
 1.40 x 0.70m	 250kg	 3m	 8.07m	 3500kg



**working height** 30m  
**maximum outreach** 17.1m  
**platform capacity** 250kg



Under-ride protection



Worm-drive basket



Laser-welded seam



Chassis outrigger controls



Display in work basket



Worm-drive turret



Perforated, non-slip floor