

STEIGER®
TB 270 pro



STEIGER® TB 270 pro

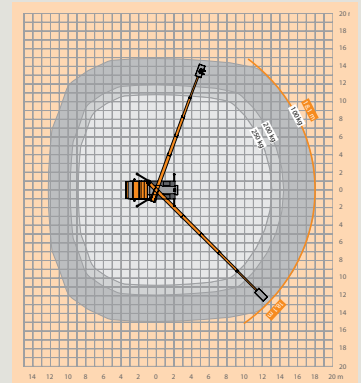
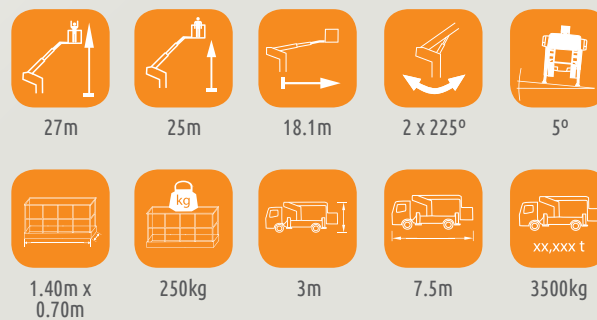
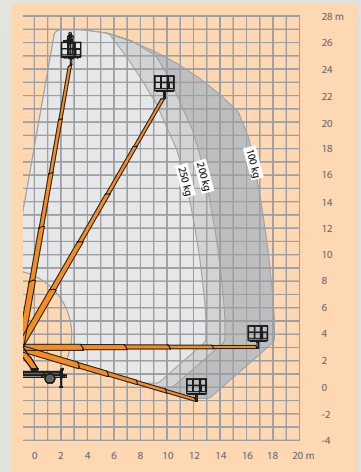
FEATURES

- 27m max. working height
- 18.1m max. outreach
- 15m max. lateral outreach
- 250kg basket-load
- 3 movements simultaneously possible (lift, rotate, telescope) + basket rotation
- Improved work speeds
- Premium technology in highest stability with easy handling
- High-strength fine-grained steel for maximum stability
- Improved basket unit with new design
- Common parts to other STEIGER® models for even more operating and maintenance efficiency
- Reduced stock of spare parts through modular design
- Improved torsion-resistant substructure construction
- Boom system with laser-welded seam (less distortion, more precise and more stable)
- Short overall length and low construction height for high manoeuvrability

The TB 270 pro features unprecedented reach capabilities. The popular work platform easily exceeds the previous performance capacities and provides stability that cannot be found anywhere else in the industry.

With the development of the STEIGER® TB 270 pro, RUTHMANN has broken through the 18m reach barrier in the 3.5t, STEIGER® TB(R) category. With a sensational 18.1m, operators have 1.7m of additional reach capacity, compared to the previous model. The lateral outreach of 15m is another highlight. The vehicle is also more compact - 200mm shorter to be exact, than its predecessor.

This reach champion is perfectly suited for rugged, everyday activities.



working height 27m
maximum outreach 18.1m
platform capacity 250kg



Under-ride protection



Worm-drive basket



Laser-welded seam



Chassis outrigger controls



Display in work basket



Worm-drive turret



Perforated, non-slip floor