

STEIGER®
T 650 HF

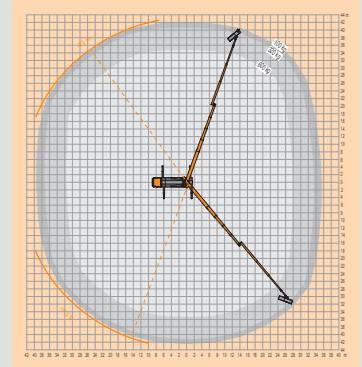
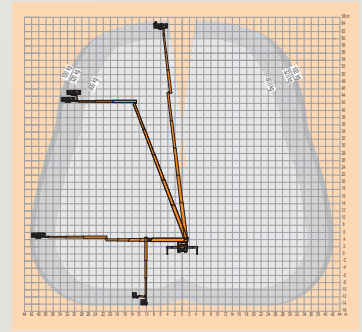


STEIGER® T 650 HF



FEATURES

- 65m working height
- 43m outreach
- 11.99m total vehicle length (depends on vehicle type)
- Top performance data due to multi-bevelled boom technology
- 'Standing' working basket perfect for 'under and up' as well as all possibilities of 'up and over and back' during lowered RÜSSEL®
- Generous 600 kg working cage load capacity
- Working below ground possible
- More possibilities with the special features HEIGHT performance
- Automatic set-up/ retraction mechanism at the push of a button
- Aluminium working cage can be extended hydraulically
- Maintenance-friendly boom system



 65m	 63m	 43m	 500°	 220°
 180°	 600kg	 2.42m x 0.97m	 3.82m x 0.97m	 <3.99m
 11.99m	 2°	 32,000kg		

working height **65m**
 maximum outreach **43m**
 platform capacity **600kg**

