

STEIGER®
T 400



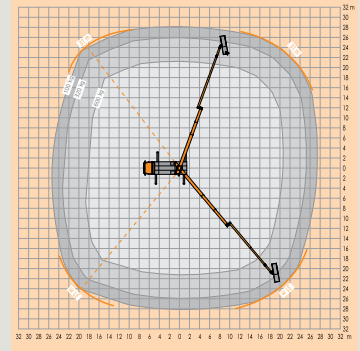
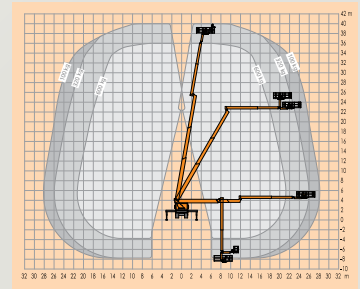
STEIGER® T 400

FEATURES

- 40m working height
- 31m outreach
- 9.75m total vehicle length (depends on vehicle type)
- Top performance data due to multi-bevelled boom technology
- Work "behind" objects using movable jib (RÜSSEL®)
- Generous 600kg working cage load capacity
- Working below ground possible
- Enter and load working cage at ground level with "Lift-Up-System"
- Automatic set-up/ retraction mechanism at the push of a button
- Aluminium working cage can be extended hydraulically
- Maintenance-friendly boom system

Like the other models in the popular HEIGHT performance series, the STEIGER® T 400 provides top performance and scores major points with its exceptional price-performance ratio.

LTE expansion work and UMTS improvements continue unabated. Only truck-mounted aerial work platforms with exceptional agility can get the job done safely and efficiently. The brand new RUTHMANN T 400 is absolutely perfect for this type of assignment. It comes with a 31m outreach and enormous upper boom length. The movable jib (RUESSEL®) and the rotating/ telescoping work cage, guarantee maximum agility at the job site.



40m	38m	31m	500°	180°
180°	600kg	2.42m x 0.97m	3.82m x 0.97m	3.95m
9.75m	2°	18,000kg		

working height 40m
maximum outreach 31m*
platform capacity 600kg



* Depending on load, angle of rotation and outfit.



HEIGHT performance series



31m outreach