

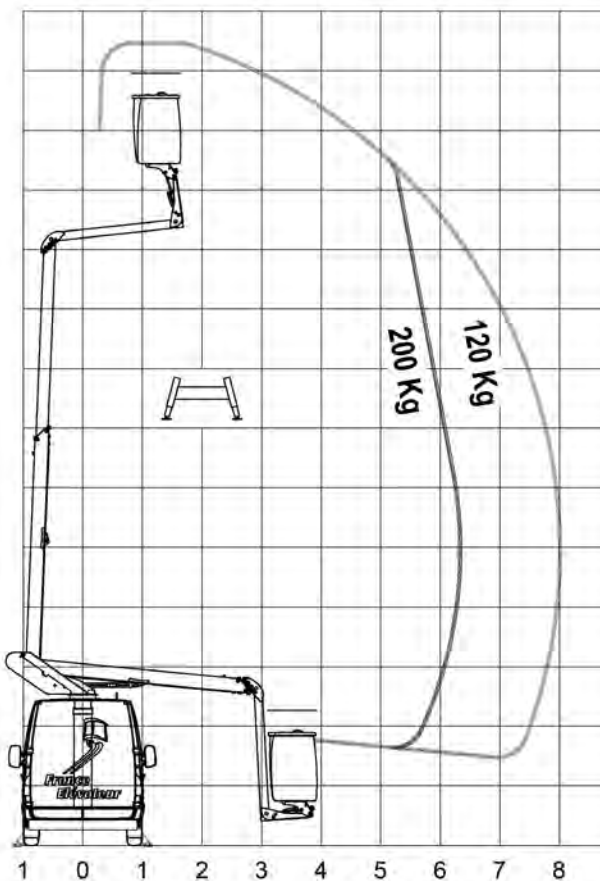
132 Fv / RENAULT MASTER

TECHNICAL DATASHEET

MADE IN FRANCE

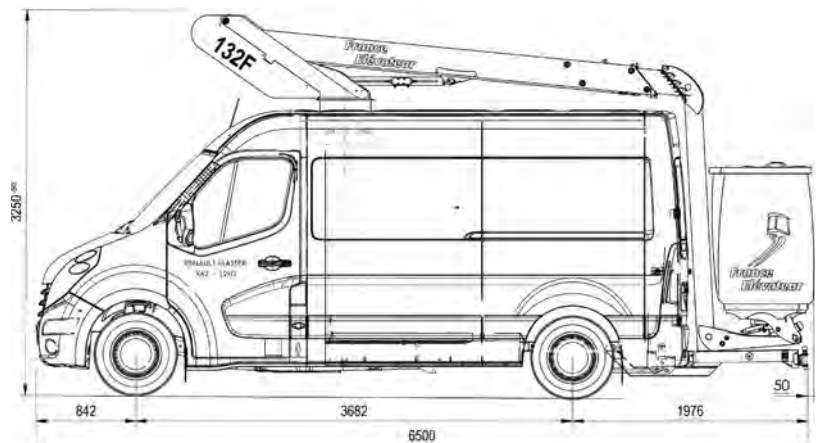


- LT LEASING COMPANIES
- AUTHORITIES
- SIGNS/PUBLICITY
- RETAILERS
- LIGHTING
- ELECTRICIANS
- DISTRIBUTION NETWORKS
- OTHER ACTIVITIES



Based on the 121 FT model, this model has a **reinforced structure** with improved **performances when working at height**, combined with two stabilisers to enable two people to be carried in the basket, making it highly **adaptable** for work across **different sectors and activities**. This 132 Fv model has **variable outreach** for increased performance.

- Excellent working height and outreach **performance**
- Use with or **without stabilisers**
- **2 x 60° adjustable basket**
- **Cargo space in relation** to the payload
- **GVW of 4250 kg**
- **Numerous options adapted** to each sector and activity
- Available as an « **ecological** » **version**



TECHNICAL SPECIFICATIONS

As standard : ● Optional : ○

Working height	13,40 m	●
Floor height	11,40 m	●
Variable outreach proportional to the load	8 m / 120 kg	●
Basket load	200 kg / 2 people	●
Turret rotation	400°	●
Maximum usage tilt / slope	5% / 15%	●
Basket dimensions	1300 x 780 x 1150 mm	●
Minimum PTAC	3 500 kg	●
Steel arm with 1 telescopic element	1	●
Cable chain holder inside the telescope		●
Electro-hydraulic and sequential commands		●
Rigid protection for the upper commands		●
1000 V insulated full opening fibre basket		●
Engage back-up remote control in cab (5 m cable)		●
Priority electro-hydraulic back-up console		●
Anti-movement safety with arm raised (below 4 kph)	As standard on RENAULT MASTERMASTER	●
Return to road position light in cab		●
Manual backup pump		●
Time counter		●
Alarm tilt detector		●
Rear platform with integrated underrun protection bar		●
2 hydraulic stabilisers		●

EQUIPMENT

Engine start and stop in the basket		○
Basket horn		○
Backup generator		○
Engine-powered clutch-hydraulic pump		○
230 V plug in the basket with 30 mA differential protection		○
Removable and insulated toolbox in the basket		○
12Vdc-230 Vac - 2 Kva converter		○
Removable and adjustable 12 Vdc LED working light		○
Wall and floor protection		○
Anti-skid floor protection		○
Interior design		○
Cone holder in cargo area		○
Signal panel support in cargo area		○
Retractable ladder holder		○
Fixed ladder holder		○
750 kg coupling hook (GVW limited to 4250 kg)		○
Reversing camera		○
Reversing radar		○
2 xenon lights + retro-reflective marking C1		○
Flashing light under the basket		○
2 x 60° basket rotation		○
Stabiliser commands from the basket		○
Cycle without stabilisers	outreach 8.00 m / 120 Kg / 2 X 30° Rear	○
BT 200 (including full door BT200 basket + backup generator)		○
Maintenance contract		○

Updated : 07/2020



ZAC DU PLATEAU
54630 FLAVIGNY SUR MOSELLE - FRANCE

Tél. +33 (0)3 83 23 31 32

commercial@france-eleveur.fr | www.france-eleveur.fr

AFTER SALES
AGENCIES

BORDEAUX

33450 Montussan
☎ +33 (0)5 56 89 90 72

PARIS SUD

91220 Brétigny sur Orge
☎ +33 (0)1 60 85 14 23

LAVAL

53000 Laval
☎ +33 (0)2 43 49 07 28

MARSEILLE

13300 Salon de Provence
☎ +33 (0)4 90 59 36 27

LENS

62970 Courcelles les Lens
☎ +33 (0)3 21 79 32 15

BENELUX

8587 Espierres
☎ +32 (0)56 51 40 26

PARIS OUEST

95310 St-Ouen l'Aumône
☎ +33 (0)1 39 22 12 12

TOULOUSE

31770 Colomiers
☎ +33 (0)5 34 35 83 50

LYON

69800 Saint-Priest
☎ +33 (0)4 37 25 33 90

NANTES

44220 Couëron
☎ +33 (0)2 40 57 02 83

CLERMONT-FERRAND

63050 Clermont-Ferrand
☎ +33 (0)4 73 84 23 22

ALLEMAGNE

04179 Leipzig
☎ +49 (0)341/30 88 95-0

132 Fv / RENAULT MASTER