

ECOLINE 270



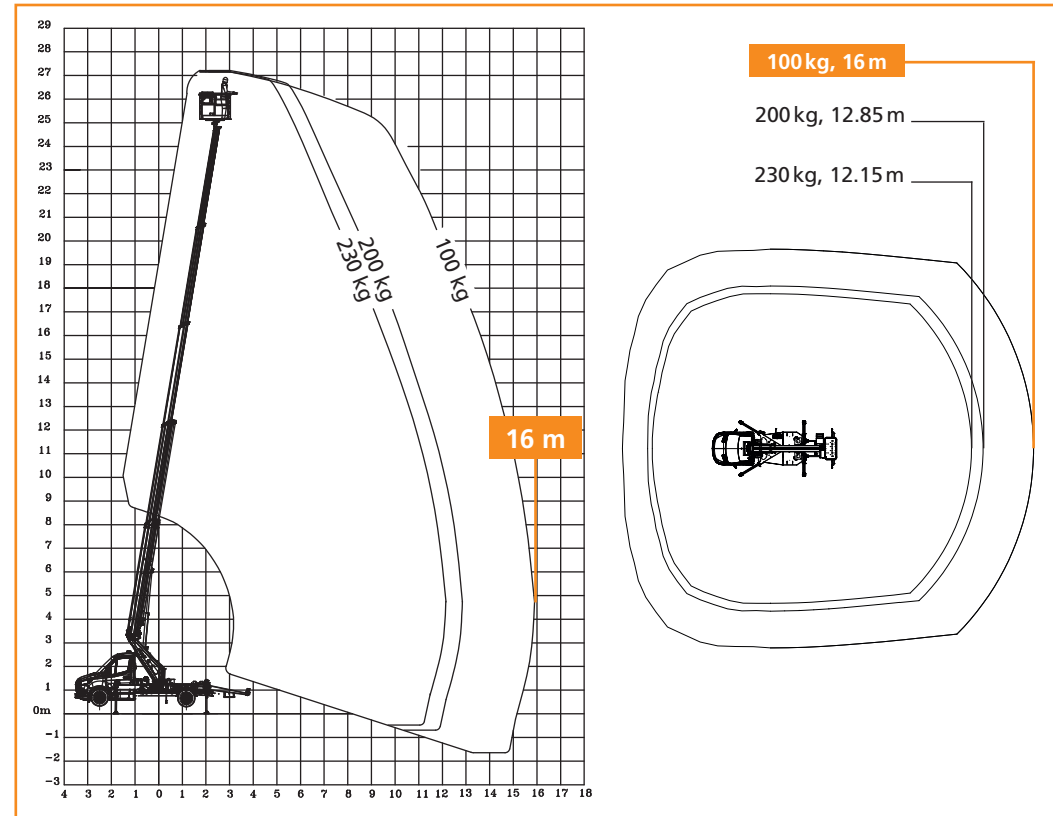
# RUTHMANNECOLINE 270

## WELCOME TO THE NEXT LEVEL



## ECOLINE 270 – The leap to the top

- +** 27 meters working height - top in the „low budget segment“
- +** Up to 16 meters outreach
- +** Stable fine-grained steel construction with high durability and reliability
- +** Large permissible inclination of the base frame up to 5° (4° more than the competition) thereby problem-free and safe positioning on slopes.

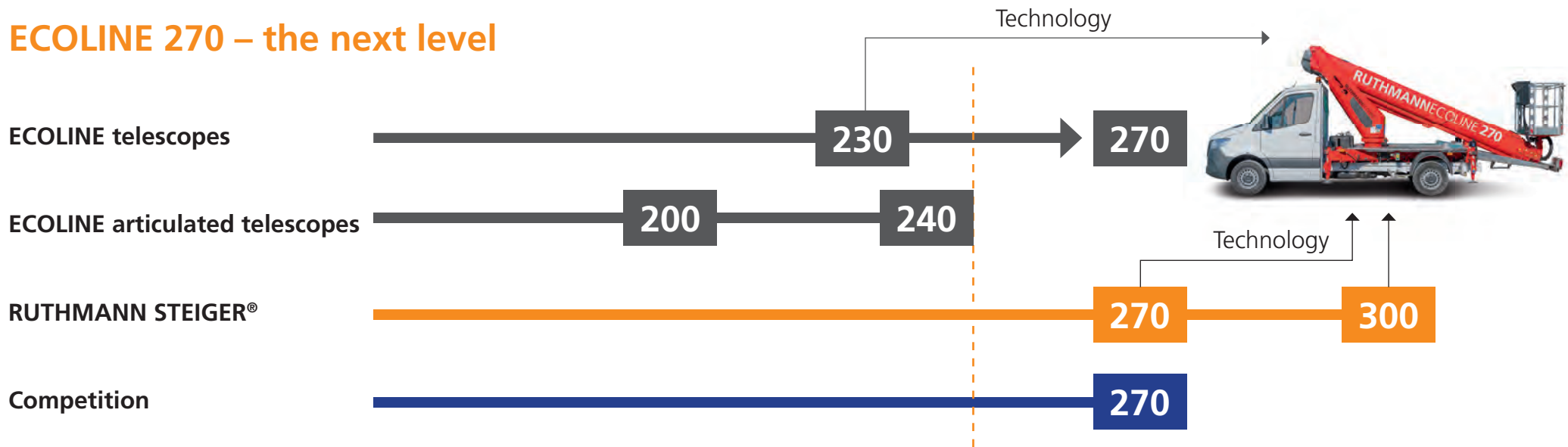


### **i** Mature, reliable technology

High performance data promise high rental income with simultaneously low purchasing and operating costs. With a working height of 27 meters, the ECOLINE is suitable for nearly all utilisations and is very compact with an overall length of only 7.53 meters.

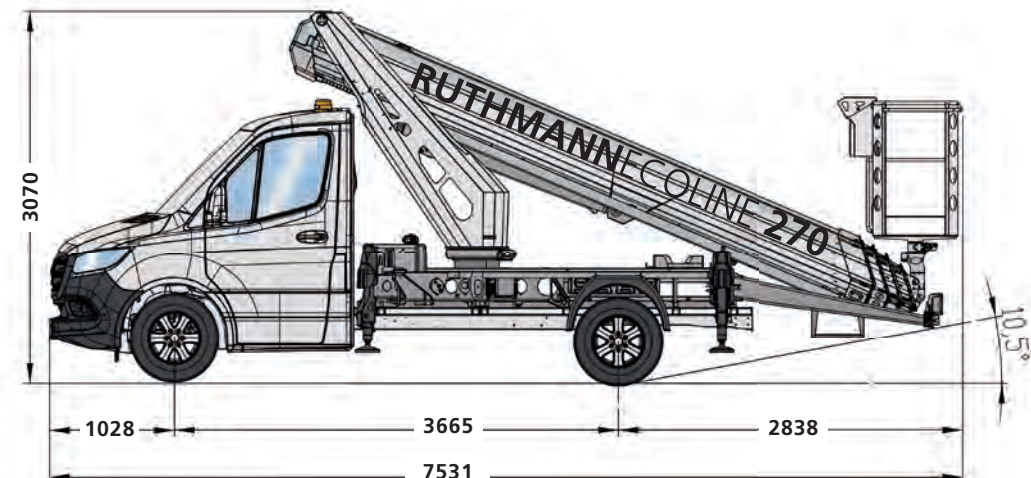
	<b>27.00 m</b>		<b>±90°</b>		<b>3.07 m</b>
	<b>16 m</b>		<b>1.30 m x 0.70 m</b>		<b>7.53 m</b>
	<b>360°</b>		<b>230 kg</b>		<b>3,500 kg</b>

## ECOLINE 270 – the next level



**+** Short overall length 7.53 m --> significantly shorter as the competition, increased manoeuvrability, lower damage risk

**+** To be mounted on the newest 3.5 t EURO 6 chassis





## The perfect match!

- +** Mature and optimised components from existing TB STEIGER® and ECOLINE machines
- +** Proven ECOLINE control system with simple and intuitive operation based on the STEIGER® model (COCKPIT).
- +** Long-term tested and 1,000-times proven stable boom system from the STEIGER® TB 270+
- +** High quality stable turret construction following the current TB STEIGER® range
- +** Optimised base frame from the ECOLINE 230 with light carrier from the current STEIGER® TB 270 pro
- +** Compatible spare and wear parts ensure fast spare-part availability

## The perfect match!





The new ECOLINE 270 associates the best of the ECOLINE and STEIGER® technology in one performant machine at an attractive price.







## FLEXIBLE STABILISATION VARIANTS

-  Variable stabilisation, even in narrow spaces
-  Modern HV stabilisation (horizontal/vertical) based on TB model
-  Narrow stabilisation possible in vehicle's profile
-  Enlarged stabilisation stroke for problem-free inclined positioning in combination with the wedge-shaped RUTHMANN supporting plates



## Diversity of use for everyone

The new ECOLINE is attractive for a wide range of target groups. Maximum performance on a compact chassis make it universally applicable.

- Painters
- Building cleaners
- Arborists
- Roofers
- Network operators
- Municipalities
- Fire protection engineers
- Electricians
- and much more



